

Creating / Collecting / Collaborating

The busy start to 2018 continues in March with the launch of further co-commissions that demonstrate our commitment to working with our sector partners including an exhibition by Ruth Barker and Hannah Leighton-Boyce at Castlefield Gallery, which launches on Thursday to coincide with International Women's Day. Plus read first reviews of *PRESENCE: A Window into Chinese Contemporary Art* and Shezad Dawood's *Leviathan Cycle, Episode 1: Ben* and see what some of our Graduate Scholars are up to.

Admission to all exhibitions and events are free unless otherwise stated.

New exhibitions:

Ruth Barker & Hannah Leighton-Boyce



Hannah Leighton Boyce, *Consequences of progress; remnants for the future 1*, 2018. Image courtesy the artist.

Over the last twelve months we've been working with our partners at Castlefield Gallery to support Ruth Barker and Hannah Leighton-Boyce to make new work for this exhibition, which previews this Thursday (8 March) for *International Women's Day*, and features as part of Manchester's [Wonder Women Festival](#).

During 2017, Ruth Barker (Glasgow) and Hannah Leighton-Boyce (Manchester) were supported by Castlefield Gallery, the University of Salford Art Collection, and Glasgow Women's Library to undertake research and production residencies, Leighton-Boyce in Glasgow, and Barker in Salford. Over the course of this period, Barker and Leighton-Boyce have exchanged many ideas, thoughts and stories, in particular through conversation and letters, their residencies directly shaping the resulting works. In 2019, the exhibition will tour to Glasgow Women's Library, after which a number of the artists' commissioned works will be acquired into the University of Salford Art Collection.

Barker's residency included the artist presenting a sonic meditation workshop for children from Clarendon Road Primary School (Eccles, Salford) in the University's Anechoic Chamber (a room designed to absorb all sound, rendering the room completely silent). Barker also used specialist production techniques in the School of Arts & Media's fibre workshop to produce rug works with artist assistant Alena Donely, a current BA Visual Arts student.

University of Salford Chancellor and 'writer in residence' Professor Jackie Kay MBE, will also write a commissioned poem inspired by the exhibition.

Preview: Thursday 8 March, 6 - 8pm; Premiere of Ruth Barker's performance *If this is the last thing that I say* at 6:15pm.

Exhibition dates: Friday 9 March - Sunday 29 April

Opening hours: Wednesday - Sunday 1 - 6pm

Venue: Castlefield Gallery, Manchester

Exhibition Tour and Discussion: Ruth Barker & Hannah Leighton-Boyce

Exhibition tour led by Castlefield Gallery's Curator Matthew Pendergast. The tour will be followed by an in-conversation, over tea and cake, with Dr Adele Patrick, Life Long Learning and Creative Development Manager at Glasgow Women's Library, Lindsay Taylor, Art Curator for the University of Salford Art Collection and exhibiting artist Hannah Leighton-Boyce, Chaired by Castlefield Gallery Director, Helen Wewiora.

Date: Saturday 10 March, 1.30 - 4pm

Venue: Castlefield Gallery, Manchester

Admission: Free, [book your place here](#).

PRESENCE:

A Window into Chinese Contemporary Art

Artists: aaajiao, Li Binyuan, Suki Chan, Chou Yu-Cheng, Luke Ching, Cao Fei, Han Feng, Chen Hanfeng, Kong Chun Hei, Wang Ningde, susan pui san lok, Ma Qiusha, Tian Taiquan, Wu Chi-Tsung, Annie Lai Kuen Wan, Yan Xing, Lu Xinjian, Sun Xun, Chen Ching-Yuan



susan pui san lok, *Trailers* (from *ROCH Fans and Legends*), 2015. Installation shot at St. George's Hall Liverpool. Photograph by Pete Carr.

Following the launch on 8 February, which included a reading by Professor Jackie Kay MBE, *PRESENCE: A Window into Chinese Contemporary Art* is now open. The exhibition, described as a 'must see' by *Art In Liverpool*, is the first time the University's entire collection of Chinese Contemporary Art has been displayed offering a unique window into 21st century artistic practice across China, Hong Kong, Taiwan and the diaspora. The sculptures, paintings, installations, videos and photographs are installed throughout the vaults in St George's Hall, Liverpool.

Presented as part of Liverpool's *China Dream* season, the exhibition is accompanied by a [catalogue](#). Details of the upcoming events programme, including curator tours and a symposium on Friday 11 May 2018 will be available soon.

In April we will announce details of our new co-commission as a legacy of this exhibition.

Exhibition dates: Until Sunday 3 June

Opening hours: Wednesday - Sunday 10am - 5pm. See [St. George's Hall website](#) for Easter opening hours.

Venue: The Vaults, [St. George's Hall](#), entrance via the Heritage Centre on St. John's Lane, Liverpool

Noor Afshan Mirza & Brad Butler: *The Scar*



Noor Afshan Mirza and Brad Butler, *The Scar*, 2018. Photo credit - Emma Jane Richards.

Continuing at HOME is one of our most recent co-commissions for the Collection: *The Scar*, a fiction film installation by Noor Afshan Mirza and Brad Butler.

Beautifully installed in the gallery at HOME, the film weaves together conspiracy theory, politics, fantasy and reality and culminates in a powerful and intriguing glimpse at a world breaking free of the patriarchy through a gender revolution.

[Watch the trailer here](#)

The Scar is commissioned by FLAMIN Productions through FILM LONDON Artists' Moving Image Network with funding from Arts Council England in partnership with HOME & no.w.here with support from University of Salford Art Collection, Spectre Productions, Delfina Foundation, Centre national des arts plastiques France, Edith-Russ-Haus Germany, and àngels barcelona.

Exhibition dates: Until Monday 2 April

Opening Hours: Monday: Closed, except for Bank Holidays; Tuesday - Saturday 12 - 8pm and Sunday 12 - 6pm

Venue: [HOME, Manchester](#)

Shezad Dawood: *Leviathan Cycle, Episode 1: Ben*



Shezad Dawood, *Leviathan Cycle, Episode 1, Ben*, production still, 2017, HD Video, 13' 30".

Courtesy of the artist and UBIK Productions.

Recently described by Laura Robertson in [The Double Negative](#) as 'a scattergun and fictional history lesson beset with schoolboy humour', [Episode 1: Ben](#) of the [Leviathan Cycle](#) is the first of a series of ten conceived and directed by artist Shezad Dawood. The film is a visual feast of found footage, carefully edited with new film and images, which are set against spoken word and accompanied by a powerful soundtrack. During the film narrator Ben recalls childhood memories of visiting his marine biologist father's place of work, The Natural History Museum in London. These memories are intertwined with the back-story of a global disaster which sets the narrative of the whole *Leviathan Cycle*.

View the trailer for [Ben](#).

The Double Negative [Review](#).

Commissioned by University of Salford Art Collection and Leviathan - Human and Marine Ecology, with support from The Contemporary Art Society.

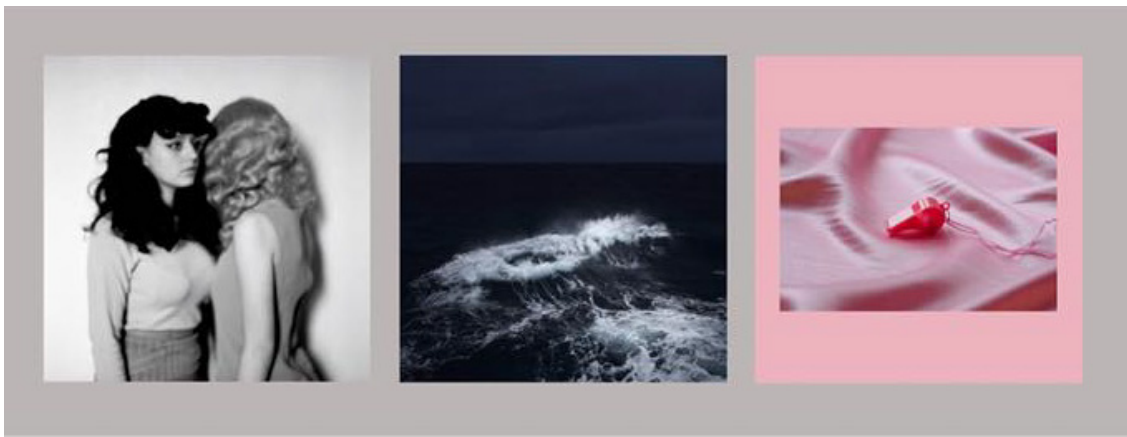
Exhibition dates: Until Thursday 29 March

Opening hours: Monday - Friday, 10am - 4pm. Closed Saturdays and Sundays.

Venue: [New Adelphi Exhibition Gallery](#), University of Salford

Graduate Scholar update:

2017/18 Jamal Jameel exhibits in Liverpool



Disparity Collective: *Positions of Power*. Image courtesy of artists.

As part of his [Graduate Scholarship](#) programme with Redeye, The Photography Network, Jamal Jameel is exhibiting *in POSITIONS OF POWER* a Liverpool based installation and exhibition.

The exhibition is by the Disparity Collective who are currently partaking in Lightbox 2017/18 [Redeye's](#) intensive year-long course, which launches the careers of professional photographers through workshops, networking sessions and support from experts in the photography industry. The programme is designed to challenge assumptions, encourage reflection and nurture artistic potential, with collaboration at its core and guidance from group mentor, Kate Jesson, Curator at Manchester Art Gallery.

Launch night: Friday 23 March, 7pm onwards

Exhibition tour by Kate Jesson: Saturday 24 March 2pm

Q&A with artists: Sunday 25 March 2pm

Exhibition dates: Friday 23 March - Thursday 28 March, 11am - 4pm

Venue: The Tapestry, 12 - 14 Gildart Street, Liverpool, L3 8ET

2015/16 Joe Beedles performs at the Future Sessions Launch Party

Also Graduate Scholar alumni Joe Beedles will be performing at an evening of audio-visual performances to launch *Future Sessions*, at Whitworth Art Gallery's Grand Hall, featuring local and international artists curated by Sean Clarke of Test Card. *Future Sessions* puts on cutting edge performances in unusual spaces and is presented by FutureEverything.

Date: Wednesday 21 March, 8 - 11pm

Venue: [The Whitworth](#), Manchester

Admission: Chargeable, [visit event page for details](#).

Also of interest from our partners:

Paradise Works: *Tipping the scales*

Artists: Corey Bartle-Sanderson, Alexander J. Croft, Richard Hughes, Precious Innes, Kieran Leach, Sam Porritt, Sara Proctor, Gwyn Williams, Alistair Woods

Tipping the scales is the inaugural exhibition presented by Kieran Leach and Precious Innes under the moniker [show.me.up](#). The curatorial duo will program a series of exhibitions, the first of which will take place at Paradise Works.

With an emphasis on sculptural work, the exhibition features UK based artists at various stages in their careers. Throughout the show there is a sense of art imitating life, as the artists tackle notions of work, play and societal pressures. From daily routines and ingrained behaviours to social tropes and leisure pursuits, the group show concerns the perfect balancing act we all aim to achieve in life.

Preview: Friday 2nd March, 6 - 9pm

Exhibition dates: Saturday 3 March – Sunday 31 March

Opening hours: Saturday and Sundays, 1pm – 5pm or by appointment.

Venue: Paradise Works, Salford. The gallery is on the first floor accessible by stairs.



Copyright © 2017, University of Salford Art Collection, All rights reserved.

Our mailing address is:

Art Collection, University of Salford, Alumni House, Salford, M5 4WT

[Unsubscribe from this list](#)

This email was sent to <<Email Address>>

[why did I get this?](#) [unsubscribe from this list](#) [update subscription preferences](#)

University of Salford Art Collection · University of Salford · Alumni House · Salford, M5 4WT · United Kingdom

