

Creating / Collecting / Collaborating

Welcome to our summer newsletter. Highlights include:

Launching in Liverpool next week is our new co-commission for collection by artist Liang Yue, for *This is Shanghai*, the second chapter of the *China Dream* festival celebrating Chinese contemporary art and culture.

This coming Thursday sees the opening of *Aquatopia* an exhibition exploring water and water scarcity. The exhibition at the Centre for Chinese Contemporary Art (CFCCA) is curated by Marianna Tsionski, Research Curator, CFCCA and University of Salford.

Following the fantastic launch of our collaborative exhibition *PRINT UnLtd.* at Salford Museum and Art Gallery there will be a range of complimentary workshops over the summer holidays.

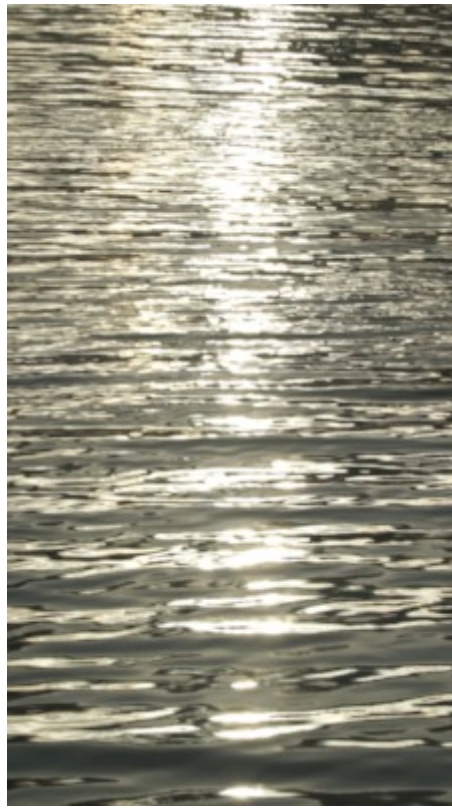
Finally, there is plenty of news from our Graduate Scholars and partners.

We will be taking a break over the summer so our next e-newsletter will be out in September.

New Exhibitions

This is Shanghai

Artists include: Liang Yue, Shi Yong, Yang Fudong, Yang Zhenzhong, Yuan Gong, Xu Zhen, Zhang Peili and Zhou Xiaohu.



LIANG Yue, *C0018*, 2018, Single-channel video, 2 mins 17 secs. Video still. Courtesy of the Artist.

Following the success of the *PRESENCE* exhibition, we are pleased to announce a new co-commission for the collection with Liverpool City Council and Open Eye Gallery, as a legacy of the partnership.

This is Shanghai is an exhibition that explores and celebrates the relationship between Liverpool and its twin city in China.

Artist Liang Yue undertook a short residency in Liverpool in April 2018. Although this was her first visit to the city, it appeared strangely familiar to her. The Pier Head reminded her of the Bund back in Shanghai, *'the noise of traffic, running up and down near the dock, and the smells ...are redolent of Huangpu River'*.

Presented by Culture Liverpool in partnership with Open Eye Gallery, *This is Shanghai* is staged at locations across Liverpool's iconic Waterfront.

This is Shanghai is showing alongside *Liverpool Biennial 2018* and is part of the celebrations for Liverpool 2018, marking the city's tenth anniversary of holding the title of European Capital of Culture in 2008.

Exhibition dates: Saturday 14 July - 7 September

Opening hours: Tuesday - Sunday, 10am - 5pm.

Venue: Cunard Building, Liverpool

For further details including additional venues visit the *This is Shanghai* webpage.

Aquatopia

Artists include: Kingsley Ng; Lucy+Jorge Orta; Joao Vasco Paiva; Chen Qiulin; Liu Shiyuan and Liu Yujia.



陈秋林 Chen Qiulin, 空的城 *The Empty City No.1*, 数码艺术微喷印刷, Photograph, 2012.

An exhibition about water and water scarcity at Centre for Chinese Contemporary Art (CFCCA). *Aquatopia* is curated by Marianna Tsionski, Research Curator, CFCCA & University of Salford, and features the work of six artists from China, Hong Kong and the UK.

Through a mixture of participatory and new media artworks *Aquatopia* creates a place for engaging and reflecting on water - what it means to our communities and our environments, and the impact of water scarcity and water pollution from different global perspectives.

Aquatopia is sponsored by the Hong Kong Economic Trade Office, with additional support from HKBU Visual Art Academy and Edouard Malingue Gallery.

Preview: Thursday 5 July, 6pm - 8pm. An opportunity to meet with artists and curators and be among the first to see the exhibition before it opens to the wider public.

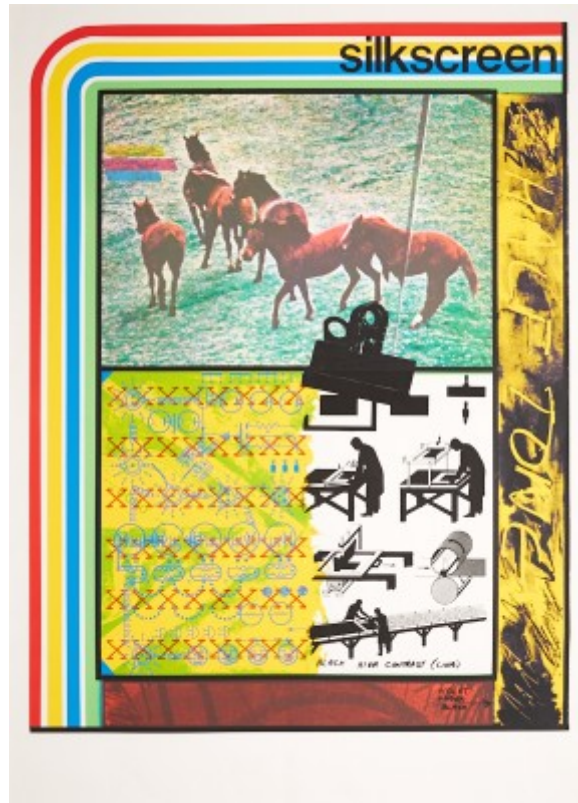
Free family friendly tours: Saturday 28 July & Saturday 25 August, 11.30am - 12.30pm, booking is advisable via the [Eventbrite page](#).

Venue: [CFCCA](#), Manchester

Continuing Exhibitions

Admission to all exhibitions and events are free unless otherwise stated.

Push and Pull



Kip Gresham, *Silkscreen (from the Bradford Print Set)*, c.1980. © Kip Gresham.

Courtesy the artist. Photograph Museums Photography North West.

Push and Pull draws together prints made in and around Salford and Manchester from the late 1970s to the present day, including works made at the Manchester Print Workshop, Hot Bed Press and Islington Mill alongside new work by University of Salford graduates.

The artists in this exhibition experiment with process, pattern and repetition, as well as considering physicality and the body. They interrogate both the methods and labours of printmaking practice as well as the labours of existing and surviving as an artist/worker today. The exhibition coincides with *PRINT UnLtd.* at Salford Museum and Art Gallery.

Exhibition dates: Monday 25 June - Friday 19 October

Opening hours: Monday - Friday, 10am - 4pm.

Venue: New Adelphi Exhibition Gallery, University of Salford

PRINT UnLtd

Artists: Lubna Ali, Claudia Alonso, Joey Collins, Gwilym Hughes



PRINT UnLtd. installation shot. Photograph courtesy of Gwilym Hughes.

PRINT UnLtd. is an exhibition of works celebrating, challenging and questioning contemporary printmaking. Throughout the summer there will be a host of workshops at Salford Museum and Art Gallery including:

Manic Monoprinting Morning

Wednesday 25 July, 10am - 12.30pm

Admission: £5. Suitable for ages 10+. Each child ticket includes 1 free accompanying adult. Bookings and further details are available on the [Eventbrite page](#).

Rauschenberg Screenprinting

Wednesday 1 August, 11.00am – 3.00pm

Admission: £1.50. Drop-in, fun for all ages and ideal 6 years+. No booking required.

Striking Stencils

Wednesday 8 August, 10am – 12pm

Admission: £1.50. Drop-in, fun for all ages and ideal 6 years+. No booking required.

Folded Books

Wednesday 15 August, 10am – 3pm

Admission: £10 per person. Suitable for ages 16+. [Booking required](#).

Electric Print

Wednesday 22 August, 10am – 12pm

Admission: £5. Suitable for ages 10+. Each child ticket includes 1 free accompanying adult. Bookings and further details are available on the [Eventbrite page](#).

A New Spirit In Printmaking

An illustrated talk by Sean Rorke, Artistic Director of Hot Bed Press.

Wednesday 5 September, 6 - 7.30pm

Admission: £3.50 per person. For bookings and further information visit on the [Eventbrite page](#).

PRINT UnLtd. is an exhibition by Salford Museum and Art Gallery and Salford Community Leisure in partnership with University of Salford Art Collection and Hot Bed Press. Funded by Arts Council England: Grants for the Arts.

#PRINTUnLtd

Exhibition dates: Saturday 26 May - Sunday 14 October

Opening hours: Tuesday - Friday 9.30am - 4.30pm; Saturday - Sunday, 11.30am - 4pm

Venue: Salford Museum and Art Gallery, Salford

Haworth Life Drawing Series

Funded by the Haworth Charitable Trust

Life drawings by students from across the School of Arts & Media.

The Haworth Life Drawing Series 2018 is dedicated to the memory of Jeremy Haworth, founder of the Haworth Charitable Trust.

Exhibition dates: Until September. Viewings by appointment only, contact the Art Collection Team at artcollection@salford.ac.uk

Venue: Council Chamber, Old Fire Station, University of Salford

Opportunities from our partners:

Salford Museum and Art Gallery: *the open* [1]



the open [1], Salford Museum and Art Gallery

Call for entries for the first Salford Open.

As part of Salford Museum and Art Gallery *Royal Academy 250* celebrations, they are launching an opportunity open to all artists living, working, studying or born in Salford to show their work as part of this exhibition. There is no age or medium restriction.

For further details visit [*the open* \[1\]](#)

Submissions hand-in: Friday 6 July between 10am - 4pm and Saturday 7 July 2018 between 12 - 3.30pm at [Salford Museum & Art Gallery](#).

Exhibition dates: Saturday 21 July - Sunday 11 November

Opening hours: Closed Monday. Tuesday - Friday 9.30am - 4.30pm; Saturday and Sunday 11.30am - 4pm.

Venue: [Salford Museum and Art Gallery](#), Salford

The Double Negative: Applications Open **for *The Double Negative Fellowship***

The University of Salford Art Collection is pleased to support *The Double Negative Fellowship 2018*, which aims to discover and encourage new, daring voices from the North of England. A brand new support package for exceptional writers who are interested in art and culture, *The Double Negative Fellows* will each receive:

- One-to-one mentoring throughout 2018 from writers of global repute.
- A £450 commission to write about Liverpool.
- Travel bursaries to research new writing and visit mentors
- Access to a little black book of national and international contacts, including publications, universities and art organisations
- Professional development training sessions from The Double Negative team.

For more information: visit [The Double Negative website](#).

Deadline: Sunday 8 July, by midnight.

Also of interest from our partners:

PAPER gallery: [Lubna Ali](#), [My Shoes](#), [My Rules](#)



Lubna Ali, *Orange Wine*. Courtesy the artist.

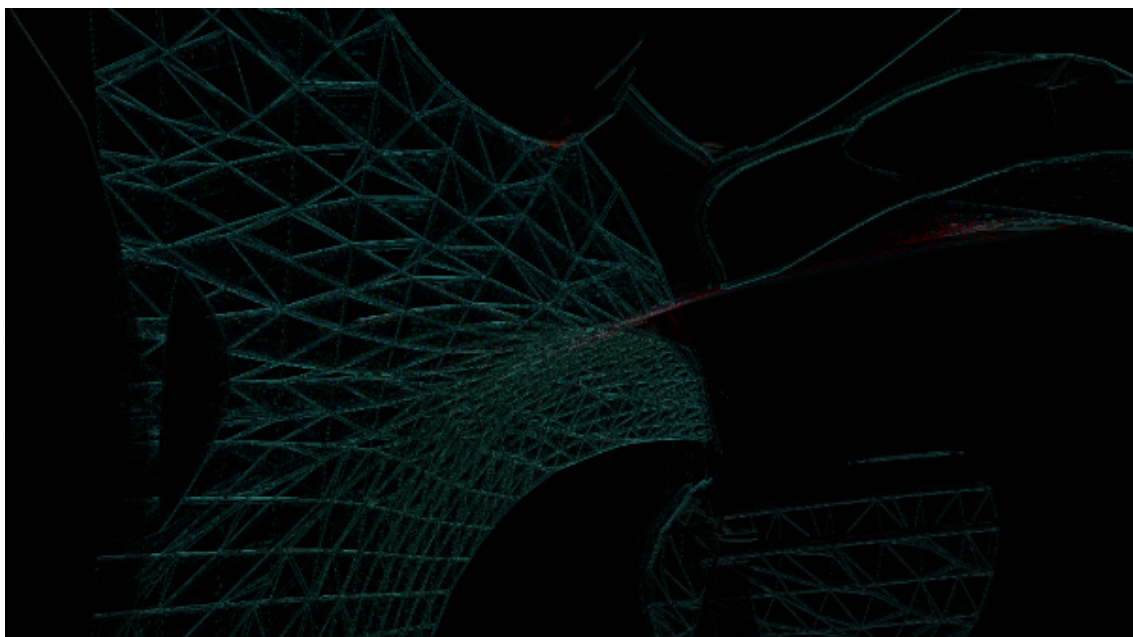
In this solo exhibition, University of Salford Visual Arts graduate and Graduate Scholar Lubna Ali highlights an issue affecting Muslim creatives. As an artist attending gallery previews and seldom offered any refreshment more than water, Ali meditates on this seemingly flippant form of exclusion.

Dates: Until Saturday 11 August, open Saturdays 11am – 5pm or by appointment

Venue: PAPER gallery, Manchester

Admission: Free

CFCCA: Joe Beedles: *Changing States*



Joe Beedles, *Changing States*. Courtesy the artist.

In this live performance by University of Salford Popular Music and Recording graduate and former Graduate Scholar, artist and musician Joe Beedles blurs the line between nightclub culture and the contemporary art world.

Date: Thursday 26 July, 6 - 7.30pm

Admission: £4, includes a glass of wine or tea on arrival. Book your place on [Eventbrite](#).

Venue: [CFCCA](#), Manchester

Nightshift International



Nightshift International, *3 Way Bath*. Courtesy the artists.

Collaborative duo *Nightshift International* (Visual Arts graduate and current Graduate Scholar Elliott Flanagan and Salford alumna Sarah Boulter) will be exhibiting at PROFORMA on Saturday 28 July. *PROFORMA* is Greater Manchester's new annual one-day showcase of contemporary art from the region developed for non-gallery settings.

The duo are also currently exhibiting in Twice as Nice at PS Mirabel until Saturday 11 August.

Working with performance and video installation, *Nightshift International* explore aspiration, budget decadence and modern living.

PAPER gallery: Daniel Wiltshire: *Polychrome*



Daniel Wiltshire, *Apollo*. 2018, Digital Collage. Courtesy the artist.

In his first solo exhibition at PAPER gallery University of Salford [Visual Arts](#) graduate Daniel Wiltshire combines the aesthetic ideals of Neo-Classicism and glitches.

Exhibition dates: Saturday 18 August - Saturday 22 September

Opening hours: Saturdays 11am – 5pm or by appointment

Venue: [PAPER](#) gallery, Manchester

Trothgard: *Songs From The Earthly Kingdom*



Trothgard, *Songs From The Earthly Kingdom*. Album artwork. Courtesy the artist.

Going by the pseudonym Trothgard, [Visual Arts](#) graduate and former [graduate scholar](#), Joe Burton has released his debut album [Songs From The Earthly Kingdom](#). For further information visit the [album trailer](#).



Copyright © 2018, University of Salford Art Collection, All rights reserved.

Our mailing address is:

Art Collection, University of Salford, Alumni House, Salford, M5 4WT

[Unsubscribe from this list](#)

