

## Creating / Collecting / Collaborating

Happy New Year and welcome to our first round-up of 2019. Our Collection continues to develop and thrive through our approach to co-commissioning new work with multiple partners across our three collecting strands: **Chinese Contemporary Art**, **About the Digital** and **From the North**. For 2019 we are excited to bring a broad and varied programme, with a rich collection of artworks which tell 'a story of now'.

In **Chinese Contemporary Art** we look forward to the *Chinternet Ugly* exhibition, launching at Centre for Chinese Contemporary Art (CFCCA) on Thursday 7 February, which will feature our new co-commission by artist Miao Ying. In Autumn as part of LOOK Photo Biennial 2019, organised by Open Eye Gallery, Liverpool, we are working on *Peer to Peer: UK and China*, an exhibition of 14 emerging photographers from China and the UK, nominated by sector experts in respective countries. One British and one Chinese photographer will be commissioned to make new work for the University of Salford Art Collection. We also continue to develop our partnership with PHOTOFAIR Shanghai and other artists and organisations in China, further information will be announced throughout the year.



Miao Ying, *Love's Labour's Lost* (2019). Image courtesy of the artist.

In **About the Digital** our developing relationship with Abandon Normal Devices (AND) sees us hosting *FREEPORT: Terminal MCR* at MediaCityUK in February. We are also in discussion about a new co-commission for the AND Festival this autumn. In July the major project *Everything I Have Is Yours* by Eileen Simpson and Ben White (Open Music Archive) launches at Salford Museum and Art Gallery. *Everything I Have Is Yours* is a new moving image and sound

artwork exploring the first decade of the UK charts, which was developed with and features Salford and Greater Manchester residents, who played in bands in the 1950s and early 1960s.



Eileen Simpson and Ben White (Open Music Archive), *Everything I Have Is Yours* project.  
Image courtesy of the artists.

Fittingly for the From the North strand the Art Collection Team will be heading 'up north' to Glasgow Women's Library on Thursday 31 January for the launch of Ruth Barker & Hannah Leighton-Boyce's exhibition. Co-commissioned by Castlefield Gallery and the University of Salford Art Collection in partnership with Glasgow Women's Library, the exhibition was originally shown at Castlefield Gallery in March 2018 to mark the 100-year anniversary of the Representation of the People Act, 1918. The launch at Glasgow Women's Library will include the premiere of *Affinity*, three new poems written and presented by Scottish Makar and University of Salford Chancellor and Writer in Residence Professor Jackie Kay.

The loan of L.S. Lowry painting *The Narcia Fitting-Out at the Tyne* (1968) from the University's Art Collection, to The Lowry has been extended. The work will continue to be on display as part of their permanent exhibition, LS Lowry: The Art & The Artist until June.

Also, On 15 February the Sixteen project is launched in the New Adelphi Exhibition Gallery, including works by photographer Craig Easton (alumnus of University of Salford) commissioned for our Collection. For *Sixteen* leading contemporary photographers have worked with sixteen-year olds across the UK exploring their dreams, hopes and fears.

Our Graduate Scholarship Programme, now in its fifth year, is going from strength to strength and I'm looking forward to catching up with our current cohort next month in a day of studio visits. Last year it was great to receive support for the Graduate Scholarship Programme from The Haworth Trust and Lady Monica Cockfield Memorial Trust Award. Both trusts will again provide funding for Scholarship places for our 2019/2020 programme; it is fantastic to receive continued support from the trusts and begin the search for 2019/2020 scholars. In June, we will also launch the 2019 *Haworth Life Drawing Series*, an exhibition of life drawings by students from our School of Arts and Media.





Michelle Sank, *Danielle and daughter, Tranmere, Cornwall*. Courtesy the photographer and *Sixteen* project.

As our Collection continues to grow we are excited about the upcoming opportunities and challenges. We will continue to develop long-term meaningful partnerships in the UK and China, allowing us to tell 'a story of now'.

In the meantime, we wish you all the very best for 2019 and upcoming events and exhibitions now follow.

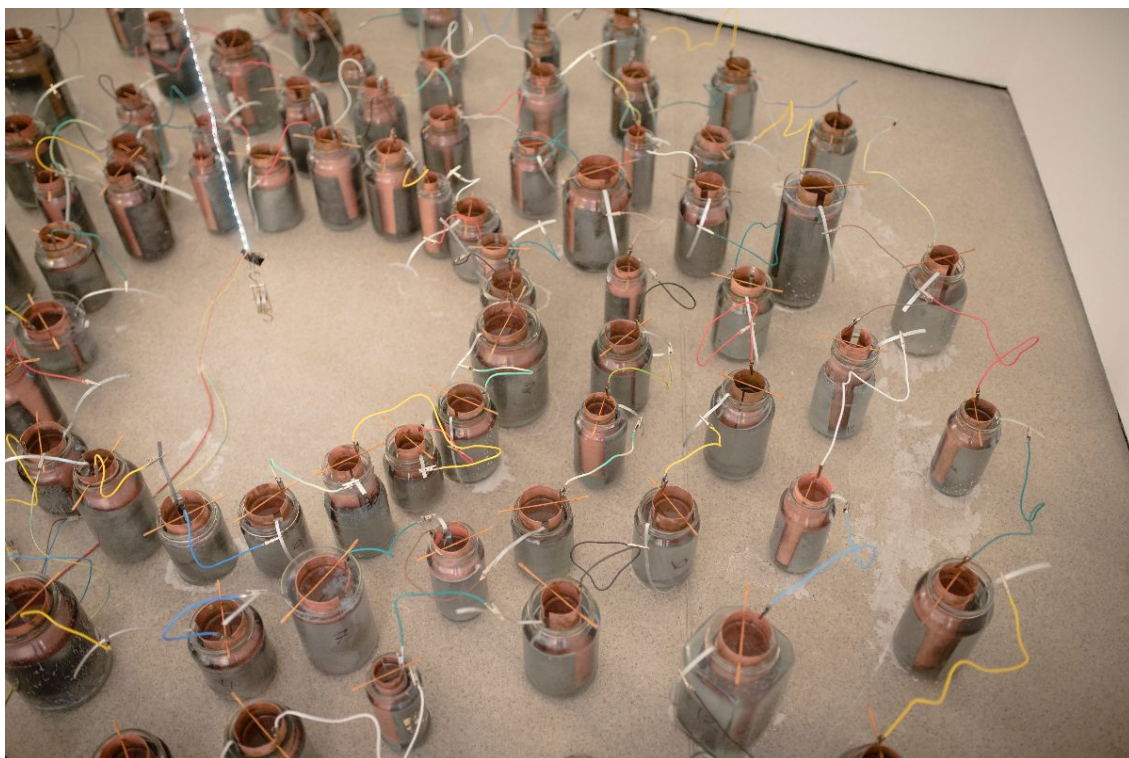
**Jennifer Iddon, Marketing and Projects Officer**

---

## **Exhibition Launch**

Ruth Barker & Hannah Leighton-Boyce

---



Hannah Leighton-Boyce, *More energy than object, more force than form*, 2018 (detail).

Photo © Drew Forsyth.

We are delighted to tour, in partnership with [Castlefield Gallery](#), *Ruth Barker & Hannah Leighton-Boyce's* exhibition to [Glasgow Women's Library](#). Launching on Thursday 31 January the evening will include Professor Jackie Kay, Scottish Makar, and University of Salford Chancellor and Writer in Residence, presenting her three new *Affinity* poems, which were written in response to the exhibition. The poems will be on our website from Monday 4 February.

Barker and Leighton-Boyce's works were developed as a result of research residencies undertaken by the artists in 2017/18, and premiered at Castlefield Gallery in March 2018. Leighton-Boyce was in residence at Glasgow Women's Library, and Barker with the University of Salford Art Collection.

Over the course of their residency periods, Barker and Leighton-Boyce exchanged ideas and thoughts, whilst delving into hidden histories and epic stories. Leighton-Boyce became interested in the relationship between the body and the archive, her new works echoing her experiences of working at Glasgow Women's Library, specifically through her decision to work with salt, drawing on its inherent properties of healing, energy, and the charge of 'coming together' she encountered at the library. Barker primarily works in performance and performative-writing and has an on-going engagement with the 'voice'. Motherhood, illness, and the economic conditions of contemporary Britain, Barker feels, are rapidly coalescing to render her publicly mute.

In developing their bodies of work the artists collaborated with others, including Barker with University of Salford student Alena Donely (now one of our [Graduate Scholars](#)) and a group of pupils from Clarendon Road Primary School, Salford, whilst Hannah took advice from scientists from the University to cast new sculptures out of salt.

The tour is a partnership project between Castlefield Gallery, the University of Salford Art Collection and Glasgow Women's Library. Works by the artists will be acquired into the University of Salford Art Collection.

**Launch:** Thursday 31 January, 5.30 - 7.30pm. Premiere of *Affinity* by Jackie Kay at 6.15pm.

**Exhibition dates:** Friday 1 February – Saturday 23 March

**Opening hours:** Monday, Tuesday, Wednesday & Friday, 9.30am - 5pm; Thursday 9.30am - 7.30pm and Saturday 12 - 4pm

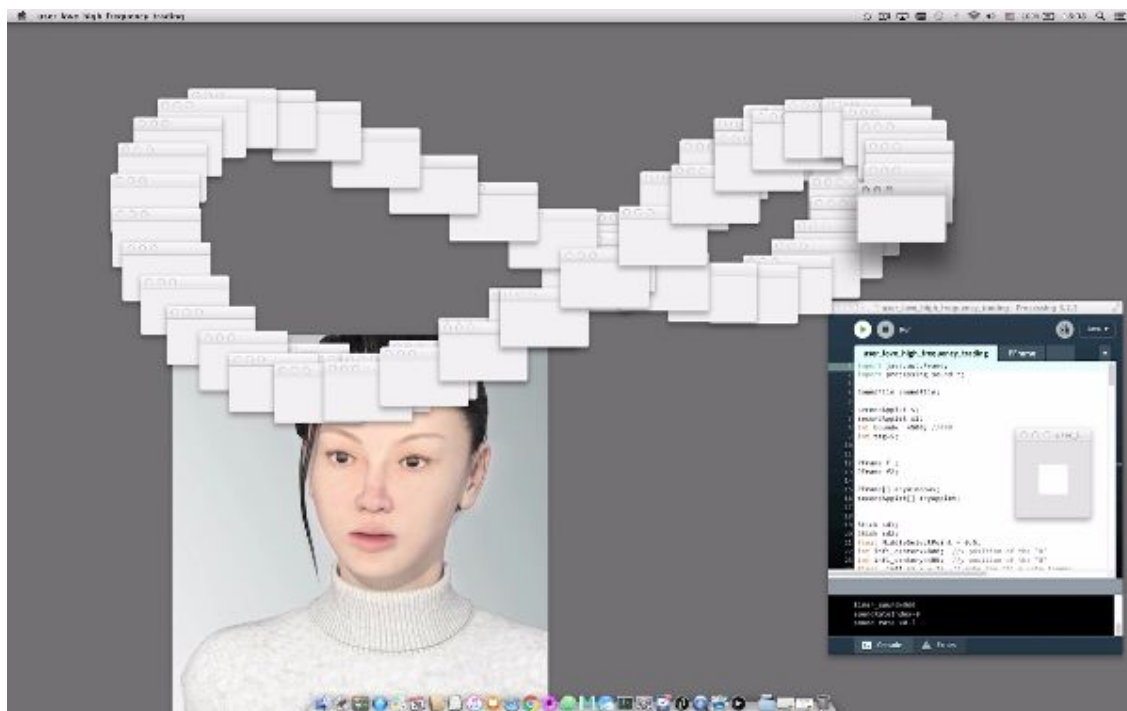
**Venue:** Glasgow Women's Library, 23 Landressy Street, Glasgow, G40 1BP

---

## Exhibitions coming soon

### Chinternet Ugly

**Artists:** aaajiao, Miao Ying, Lin Ke, Liu Xin, Lu Yang and Ye Funa



aaajiao, *hate you but love you*. Image courtesy of the artist

A new group exhibition which navigates the messy vitality of China's online realm – a space where artists can engage, play and debate.

This exhibition features works by six leading new media artists, including a new co-commission for University of Salford Art Collection and CFCCA, by artist Miao Ying; and also work by aaajiao an artist already in our Collection.

Focusing on a younger generation of artists – the first to have grown up with mass digital technology – *Chinternet Ugly* invites the viewer to explore the complex and contradictory nature of China's hyper-regulated digital sphere from the perspective of some of its most dynamic and engaging artists.

For further information visit [Chinternet Ugly](#).

**Launch:** Thursday 7 February, 6 - 8pm

**Exhibition dates:** Friday 8 February – Sunday 12 May

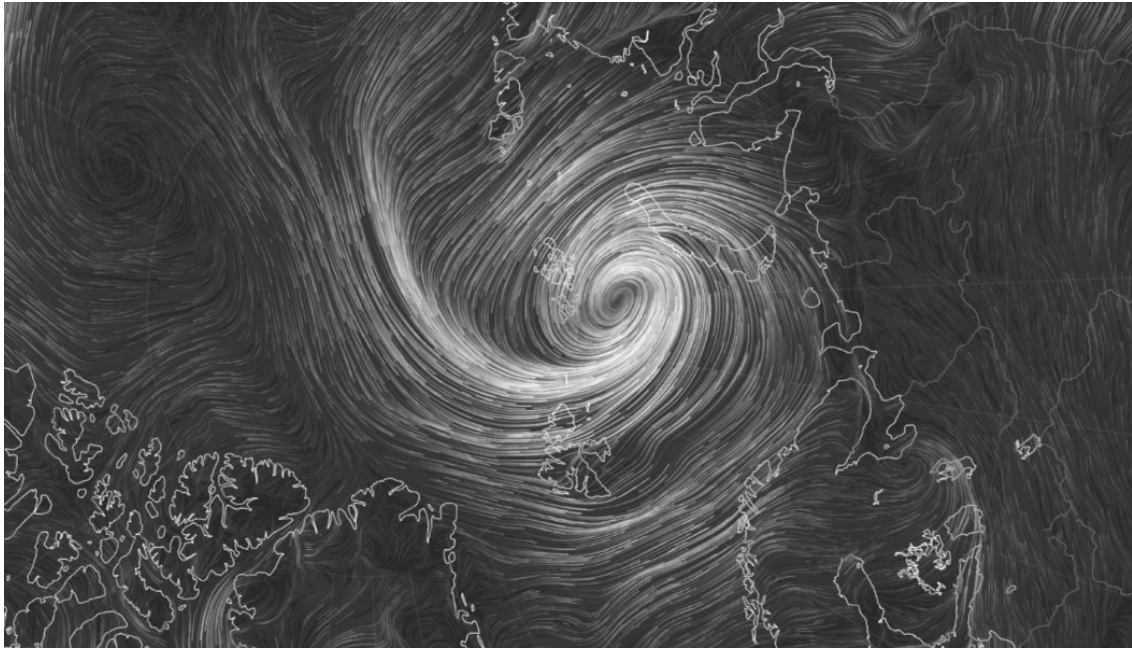
**Exhibition opening times:** Tuesday to Sunday, 10am - 5pm (closed Mondays)

**Venue:** CFCCA, Manchester

---



# FREEPORT: Terminal MCR exhibition and talks programme



Geocinema, *Editing Worlds* (2018). Image courtesy of the artists and AND.

FREEPORT: Terminal MCR is a new exhibition, taking place at our MediaCityUK campus, presented by our partners Abandon Normal Devices (AND).

In a time when free movement, free trade and freedom of communications apparatus are subject to intense political machinations, FREEPORT: Terminal MCR explores citizenship in the age of the internet.

Accompanying this temporary showcase of newly commissioned artworks and screenings, there will be a series of talks entitled FREEPORT: Critical, which will delve further into the artworks. For further details on the talks and speakers visit FREEPORT:Critical.

The new works shown at University of Salford, MediaCityUK in FREEPORT: Terminal MCR will also be on display on AND's new digital art distribution platform nnn.freeport.global

**Exhibition dates:** Tuesday 12 - Saturday 16 February, 11am - 5pm

**Talks:** Friday 15 February, 1 - 4.30pm, free but booking recommended.

**Venue:** University of Salford, MediaCityUK

---

## News

### Congratulations to Research Curator Marianna Tsionki

We are delighted to announce that University of Salford and Centre for Chinese Contemporary Art (CFCCA) Research Curator Marianna Tsionki's exhibition proposal Meteorological Mobilities has been selected by apexart through its 2019-2020 NYC Open Call. Meteorological Mobilities will exhibit at apexart, New York from 28 May - 1 August 2020.

Meteorological Mobilities urges a radical re-thinking on the way we act collectively upon climate change as planetary citizens. Far from promoting planetary catastrophism, exotic miseries, and passive resistance, the works on view aim to raise awareness of climate injustice and challenge the dominant political power of the countries and corporations which are primary contributors to climate change.

---

## Symposium

### The Civic Agency of Art

*The Civic Agency of Art* is a one day symposium co-programmed by the University of Salford and Open Eye Gallery, Liverpool. This event brings together practitioners, researchers and academics across the art, design and community sector, to explore the civic role of the cultural sector within our current socio-political climate.

What role can art and design play in society today, and how do we navigate the complexities of ethics, agency and sustainability within such projects?

From social responsibility of applied design to inclusive pedagogies and transforming cultural venues into useful spaces, we will discuss the possibilities of practice through a series of presentations, panel speakers and open room debate.

**Speakers include:**

Alistair Hudson: Director of Manchester Art Gallery and the Whitworth Art Gallery

Stephen King: Photographic artist and photographer in residence with Heart of Glass, St. Helens.

With more speakers to confirm shortly.

**Dates:** Wednesday 20 February, 10am - 3pm

**Venue:** University of Salford

**Admission:** Free, for bookings or further information please contact [Tim Isherwood](#), Programme Leader MA Arts & Media and Lecturer in Graphic Design, University of Salford: [t.isherwood@salford.ac.uk](mailto:t.isherwood@salford.ac.uk)

---

## Continuing Exhibitions

*Acquired: a century of collecting*



Yang Yongliang, *Mountains of Crowds*, 2016. Still from video. Courtesy the artist. © Yang Yongliang

Charting a 100-year history of collecting this exhibition brings together the art collections of Salford Museum and Art Gallery and the University of Salford for the first time.

Works on display include paintings by Vanessa Bell, Graham Sutherland and Mandy Payne; sculptures by Jacob Epstein and Willow Rowlands; prints and drawings by Albert Adams, Jai Redman; photography by Shezad Dawood and a video work by Yang Yongliang.

#### **Exhibition tours**

Find out more about the works in the exhibition in these free guided tours:

Wednesday 6 February , 1 - 1.45pm

Wednesday 13 March, 6 - 6.45pm

Thursday 2 May, 1 - 1.45pm

**Admission:** Free

**Exhibition dates:** Until Sunday 9 June 2019

**Opening hours:** Tuesday - Friday 9.30am - 4.30pm; Saturday - Sunday, 11.30am - 4pm. Closed on Bank Holidays.

**Venue:** Salford Museum and Art Gallery, Salford



## Last chance to see

### *In focus: Chinese Contemporary Art*

**Artists:** Han Feng, Wang Ningde, Ma Qiusha, Tian Taiquan, Yan Xing, Lu Xinjian, Liang Yue



Han Feng, *Shoe for Bird*, 2012. Mixed media. Photograph Museum Photography North West.

The University's collection of Chinese contemporary art includes works by 23 artists in painting, photography, sculpture, video and installation. This exhibition presents some highlights from the collection, with a focus on works in photography, printmaking and painting.

**Exhibition dates:** Until Friday 1 February 2019

**Opening hours:** Monday - Friday, 10am - 4pm.

## *Highlights from Push and Pull*

**Artists:** Maurice Carlin, Cecile Elstein, Michael Green, Kip Gresham, Richard Riley, Paul Ritchie, Alan Whitehead



Maurice Carlin, *Temporary Custodians 45* (2016), Screenprint. Courtesy the artist.

An exhibition from the University's Collection drawing together prints made in and around Salford and Manchester from the late 1970s to the present day.

**Exhibition dates:** Until March 2019

**Opening hours:** Viewings by appointment only, contact [artcollection@salford.ac.uk](mailto:artcollection@salford.ac.uk)

**Venue:** Council Chamber, The Old Fire Station, University of Salford, M5 4WT

---

## **Also of interest from our partners**

### **Job opportunity**

### **Salford Culture & Place Partnership: Head of Partnerships**

Salford Culture & Place Partnership (SCPP) is seeking to appoint a highly motivated Head of Partnerships to join the artists and organisations that are making a real difference.

This is a unique and exciting opportunity to significantly influence and lead the development of

Salford as a city with culture at the core. The Head of Culture and Place will manage the goals and objectives set out by the SCPP, harnessing the shared sense of vision, enthusiasm and commitment demonstrated within the Salford Culture and Place Strategy.

For further information and an application pack visit [The Lowry jobs page](#) or for any enquiries please contact The Lowry's HR department on 0161 876 2068.

**40 hours flexible per week worked | £50,000 per annum | 18 month fixed term contract**

**Application deadline:** Monday 21 January at 10am

**Notification of Interview:** Friday 25 January

**Interviews:** Friday 8 February

---

## **Salford Museum and Art Gallery**

### **Royal Academy Readers: Image through Text and Text through Image**

Join Dr Mariana Casale for a unique reading experience around a selection of exciting works of art on special loan from the Royal Academy.

Over the course of five monthly sessions, a wide range of paintings, sketches, sculptures and other works will be explored through the reading of a selection of stories on themes such as work, landscape, the body, community and relationships.

The [\*Salford Royal Academy Takeover\*](#) exhibition at Salford Museum and Art Gallery includes *Shearwater* (1975) by Elisabeth Frink and *Pool Made with Paper and Blue Ink for Book* (1980) by David Hockney on loan from the University of Salford Art Collection.

**Date:** Wednesday 9 January, 6 - 7.30pm

**Admission:** £5, booking not required.

**Venue:** Salford Museum and Art Gallery, Salford

---

## **PAPER gallery**

### **Launch of new online magazine**

On the 18 January, PAPER will launch its new on-line art magazine, [\*the Fourdrinier\*](#). The magazine will include features by writers from PAPER gallery's critical art writing development programme, which is supported by University of Salford Art Collection.

---

## **Castlefield Gallery**

### **With A Little Help From... Peer Support with Chloe Cooper**

Castlefield Gallery kick off the new year by making their January [Castlefield Gallery Associates](#) session open to members and non-members for a free taster session.

Join Chloe Cooper for a practical session focused on peer support groups. From the pros and



cons, formats and best models for providing artist-centred critical feedback to being a hive-mind of knowledge when it comes to borrowing equipment, hiring spaces and new ways of making things.

For further details visit the [Eventbrite page](#).

**Date:** Tuesday 29 January, 6.30 - 8.30pm

**Admission:** Free, booking required via [Eventbrite](#).

**Venue:** Castlefield Gallery, Manchester

---

## Museum 2050, Zhi Art Museum Call for papers

### *Defining institutions: Proposals for Museums of the Future*

Museum 2050's 2nd annual symposium, *Defining Institutions: Proposals for Museums of the Future*, seeks to be a forum for suggestions about what institutions in China could be and how they could engage with artists. The rapidly expanding institutional landscape in China allows for the unique opportunity to redefine museums' missions in a context often free of expectations about what an institution should be and how it relates to audiences.

All proposals are due to [contact@museum2050.com](mailto:contact@museum2050.com) by **January 20, 2019**. For further details visit the [Museum 2050 website](#).

---



---

Copyright © 2018, University of Salford Art Collection, All rights reserved.

#### **Our mailing address is:**

Art Collection, University of Salford, Humphrey Booth House, Salford, M5 4PF

[Unsubscribe from this list](#)

---

This email was sent to <<Email Address>>

[why did I get this?](#) [unsubscribe from this list](#) [update subscription preferences](#)

University of Salford Art Collection · University of Salford · Alumni House · Salford, M5 4WT · United Kingdom

