

Creating / Collecting / Collaborating

This month we are pleased to announce the special events programme to accompany *PRESENCE: A Window into Chinese Contemporary Art*; including a discussion day in May exploring contemporary culture from China, Taiwan, Hong Kong and the diaspora.

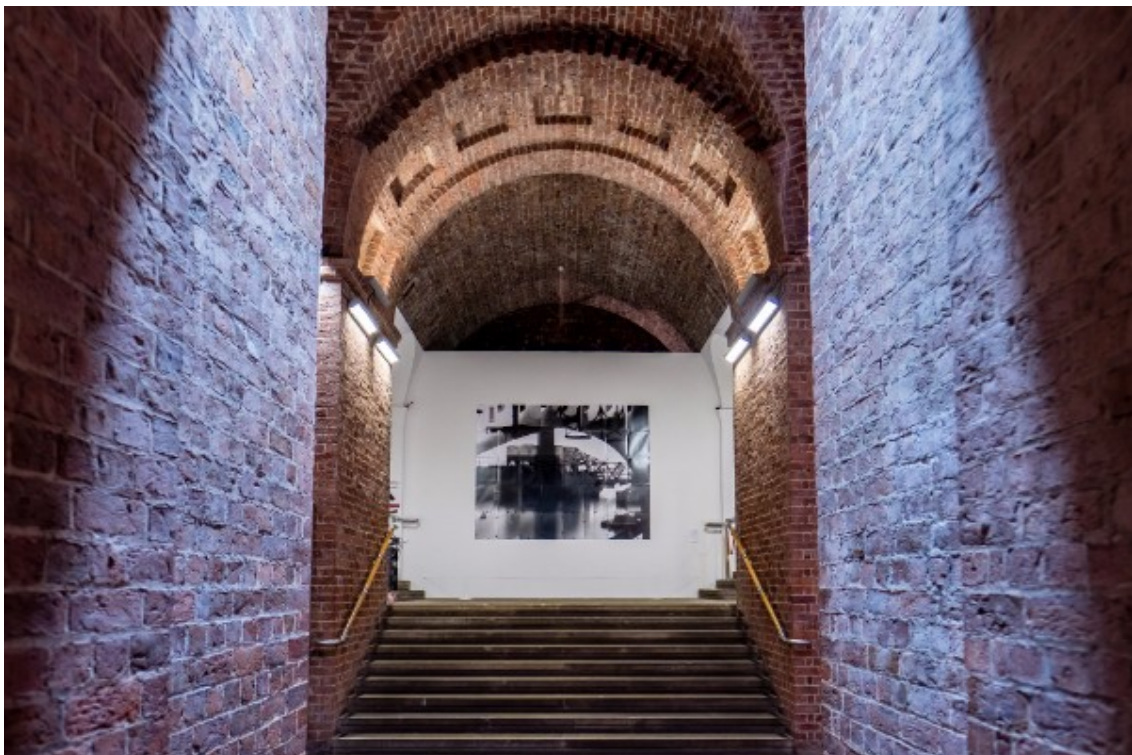
We are also delighted to see our ongoing commissioning and collecting work acknowledged in *Frieze*; plus further press coverage for the *Ruth Barker & Hannah Leighton-Boyce* exhibition as well as our *Engels' Beard* sculpture.

Admission to all exhibitions and events are free unless otherwise stated.

***PRESENCE* Events:**

Discussion day

PRESENCE: A Window on Engaging with Chinese Contemporary Art and Culture



Luke Ching, Wall: Room 118, Titanic Hotel, Stanley Dock, Regent Road, Liverpool, 2017.

Installation shot at St. George's Hall, Liverpool. Photograph by Pete Carr.

A day of workshops and discussion with leaders in the field organised by University of Salford Art Collection in partnership with Open Eye Gallery and Centre for Chinese Contemporary Art.

This event is aimed at curators, directors, artists, students, writers and funders who are interested in learning more about contemporary culture from China, Taiwan, Hong Kong and the diaspora, and who might be looking to develop exhibitions, commissions or collaborations in the UK or internationally.

For further information and bookings, visit the [Eventbrite page](#).

Date: Friday 11 May 9.30am – 4pm

Venue: Court Room, [St. George's Hall](#), entrance via the Heritage Centre on St. John's Lane, Liverpool

Admission: £25 general admission and £18 students / artists. [Bookings via Eventbrite](#).

Free curator tours:

Exhibition tours led by [PRESENCE](#) curators Stephanie Fletcher and Lindsay Taylor.

Friday 13 April

Wednesday 25 April

Thursday 17 May

Thursday 31 May

All tours will start at 2pm on the stated dates. No booking required, Meet at reception.

Venue: The Vaults, [St. George's Hall](#), entrance via the Heritage Centre on St. John's Lane, Liverpool.

In the press:

Our 'pro-active commissioning and collecting policy' was cited as a 'positive sign for things to come' by [Frieze](#) last week in an article by Tom Emery exploring the art scene in Manchester and Salford.

Further afield our sculpture *Engels' Beard* featured in [Westdeutsche Zeitung](#) in an article exploring old and new sculptures and statues of Friedrich Engels. The newspaper is based in Wuppertal, Germany, where Engels was born and the feature was produced in preparation for Engels' 200th birthday in 2020.

Plus positive coverage for our co-commissioned exhibition at Castlefield Gallery (see below).

Exhibitions:

[Ruth Barker & Hannah Leighton-Boyce](#)



Hannah Leighton-Boyce, Studio View, Work in Progress. Courtesy the artist.

This inspiring exhibition co-commissioned with Castlefield Gallery has received much positive coverage since its launch last month; links can be viewed on the [exhibition page](#). In an [interview](#) current Visual Arts student, Alena Donely discusses working with artist Ruth Barker and how this has aided her own practice. MAP Magazine Reviewer Jazmine Linklater's (a current Salford MA student) [article](#) describes perfectly both the content and aesthetic of the exhibition.

Chancellor and Writer in Residence Jackie Kay will be producing new work about the exhibition, which will tour to [Glasgow Women's Library](#) in 2019.

Exhibition dates: Until Sunday 29 April

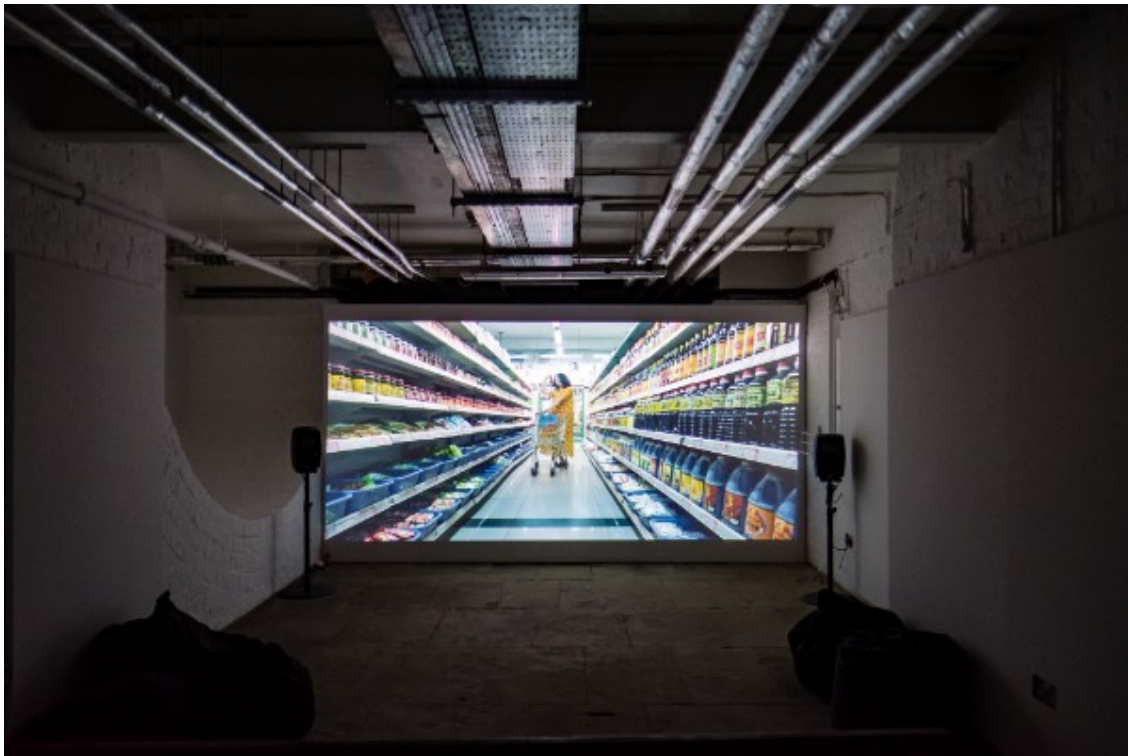
Opening hours: Wednesday - Sunday 1 - 6pm

Venue: [Castlefield Gallery](#), Manchester

PRESENCE:

A Window into Chinese Contemporary Art

Artists: aaajiao, Li Binyuan, Suki Chan, Chou Yu-Cheng, Luke Ching, Cao Fei, Han Feng, Chen Hangfeng, Kong Chun Hei, Wang Ningde, susan pui san lok, Ma Qiusha, Tian Taiquan, Wu Chi-Tsung, Annie Lai Kuen Wan, Yan Xing, Lu Xinjian, Sun Xun, Chen Ching-Yuan



Cao Fei, *Haze and Fog*, 2013. Installation shot at St. George's Hall Liverpool. Photograph by Pete Carr.

PRESENCE features work by 19 artists from University of Salford Art Collection giving a unique window into 21st century artistic practice across China, Hong Kong, Taiwan and the diaspora.

Curator Lindsay Taylor talks to [The Guide Liverpool](#) about the themes and works in the exhibition.

Lindsay Taylor recently visited Shanghai with Sarah Fisher, Director of Open Eye Gallery, to meet with artist Liang Yue who is being co-commissioned with Liverpool City Region Combined Authority to make new work for collection as a legacy of the collaboration. More details next month.

Exhibition dates: Until Sunday 3 June

Opening hours: Wednesday - Sunday 10am - 5pm. See [St. George's Hall website](#) for Easter opening hours.

Venue: The Vaults, [St. George's Hall](#), entrance via the Heritage Centre on St. John's Lane, Liverpool

Haworth Life Drawing Series

Funded by the Haworth Charitable Trust

Life drawings by students from across the School of Arts & Media.

The Haworth Life Drawing Prize, a travel bursary of £750.00, will be presented to one student at the preview. This year there is also the addition of a second place prize of £150.00 and a third prize of £100. The awards are judged upon the quality of the drawings/paintings in the students' wider portfolios, their development of skills and their active participation to the life drawing classes.

The Haworth Life Drawing Series 2018 is dedicated to the memory of Jeremy Haworth, founder of the Haworth Charitable Trust.

Preview: Friday 13 April, 4 - 6pm. All welcome.

Venue: Council Chamber, Old Fire Station, University of Salford

Admission: Free

Embody



Louise Giovanelli, *Collar III*, 2016. Courtesy Louise Giovanelli.

Organised by Critical & Contextual Studies in the School of Arts & Media and in collaboration with the University of Salford Art Collection, this exhibition presents selected works from final year dissertation projects alongside works from the University's Art Collection.

Launch event: Thursday 3 May, 4 - 6pm

Exhibition dates: Monday 30 April - Friday 15 June

Opening hours: Monday - Friday, 10am - 4pm.

Venue: New Adelphi Exhibition Gallery, University of Salford

Graduate Scholar update:

[2017/18 Claudia Alonso exhibits at Manchester Museum](#)



Courtesy of artist.

Visual Arts Graduate and current Graduate Scholar Claudia Alonso is exhibiting in a group exhibition *A Rubbish Night in the Museum*. The artwork and accompanying research in this exhibition seeks to question and challenge how we deal with our rubbish.

Launch night: Thursday 19 April, 6 - 9pm; will include readings, panel discussions and food.

Admission: Free, for catering purpose please register on the [event page](#).

Exhibition continues: Friday 20 - Sunday 22 April, 10am -5pm

Venue: [Manchester Museum](#), 3rd Floor

Also of interest from our partners:

Salford Sessions at CFCCA

Students from our [MA Music](#) course will be performing new and original musical pieces composed in response to the current CFCCA exhibition *NOW: A dialogue on female Chinese contemporary artists*.

On the same evening the CFCCA are also hosting a historic walking tour 6 - 7.30pm, which gives voice to inspiring women from Manchester's rich history. This event is ticketed and tickets are available via their [Eventbrite page](#).

Date: Thursday 26 April, 6.30 - 6.45pm and 7.30 - 7.45pm

Venue: [CFCCA, Manchester](#)

Snapshot to WeChat: A Migration of Identity

Worldwide, we take and share over three billion photos on social media each day. This exhibition looks at everyday photographs taken by people in China, considering how the

casual act of snapping photos has become a crucial part of how we understand ourselves.

Dates: Until Sunday 17 June

Venue: [Open Eye Gallery](#), Liverpool

Technology: Past and Future

Hosted by [Quays Culture](#), in partnership with the University of Salford, this exhibition celebrates the breadth of digital talent across Greater Manchester. One artist representing each of the 10 boroughs will showcase a unique artwork incorporating digital techniques during the exhibition.

Exhibition dates: Monday 9 April – Friday 4 May

Venue: [University of Salford](#), MediaCityUK Campus

Opportunities from our partners:

the open [1]: call for entries

Call for entries for the first Salford Open Exhibition.

As part of our Royal Academy 250 celebrations, Salford Museum and Art Gallery are launching an opportunity open to all artists living, working, studying or who were born in Salford to show their work as part of this exhibition taking place from 21 July until 11 November.

Prizes: 1st place - £250; People's choice - £100 (awarded at the end of the exhibition) and other sponsor prizes to be announced.

How to enter: [entry form and guidelines](#).

Job vacancies with Salford Community Leisure

Salford Community Leisure are currently recruiting for an Assistant Arts Development Officer, Programming and Events Officer and a Casual Arts Worker. Full details for all these jobs are available on their [website](#).

The Future World of Work: call for entries

As part of FACT and Culture Liverpool's *The Future World of Work* programme, FACT are announcing an open call for workplace-based creative residencies. Artists and creative practitioners are invited to submit proposals exploring how new working practices, business processes, and technologies are changing working life.

Outcomes will be presented in an exhibition at FACT in Spring 2019.

How to apply: see [FACT website](#).

Deadline: Monday 16 April 2018, 10am.

Whisper Artist in Residence: Open Call

Centre for Chinese Contemporary Art (CFCCA) have an open call opportunity for contemporary visual artists based in the UK to apply for a fully funded 3 month artist residency on site at CFCCA Gallery in Manchester.

How to apply: see [CFCCA website](#).

Deadline: Monday 16 April

Dialogues 5: Call for applications

Mark Devereux Projects is inviting applications from artists for *Dialogues 5*, a new project providing tailored critique and mentoring for five visual artists.

[Dialogues 5 application form – download here](#).

Deadline for applications: 5pm Sunday 29 April 2018.

For further information: [Dialogues 5 webpage](#).

And finally:

Stay with us...

Later this month we will be contacting you to ask if you still want to receive our monthly e-newsletters. So keep an eye out for this email AND if you want to continue keeping up to date with our comings and goings respond to this email or alternatively why not [Opt in now](#) to our e-newsletters.



Copyright © 2017, University of Salford Art Collection, All rights reserved.

Our mailing address is:

Art Collection, University of Salford, Alumni House, Salford, M5 4WT

[Unsubscribe from this list](#)

This email was sent to <<Email Address>>

[why did I get this?](#) [unsubscribe from this list](#) [update subscription preferences](#)

University of Salford Art Collection · University of Salford · Alumni House · Salford, M5 4WT · United Kingdom

